



Key achievements

- Phi Group encouraged early engagement with Redrow Homes and their Engineer, to ensure the most cost effective and buildable solution was used.
- The Permacrib wall is a maximum height of nearly 7.0m, so temporary earthworks were a major consideration.
- Phi Group provided the full design, supply & installation service.

The project

Redrow Homes secured suitable land to develop a large housing site at Ebbsfleet in Kent, which is a prime location to commute into the City of London. The scheme also involved the construction of a new hotel. The first phase of the Permacrib timber crib wall was to enable the construction of this hotel, with the second phase carried out some months later to enable Redrow Homes to continue building the new houses.

The challenge

Due to the maximum retained height of nearly 7.0m, the temporary earthworks were a major consideration when developing the retaining wall solution. Phi Group gave Redrow homes various options which included excavating the temporary earthworks to 60 degrees or 45 degrees. Each option has an effect on the wall thickness, and hence cost.

The solution

The Permacrib timber crib system was chosen as the most cost effective, buildable and aesthetically pleasing solution. The finished Permacrib wall was 370m long, with a face area of nearly 1,500m² and a maximum retained height of 6.90m. All designed, supplied and installed in house by Phi Group.

“Phi Group prides itself on being solutions led, not product led, so offers our Clients the most suitable solution to meet their requirements. We have successfully carried out several major projects for Redrow Homes and are their first call when retaining walls are needed”

Robert Torrington, Business Development Director Phi Group

Application

Slope Stabilisation

Technique

Permacrib Timber Crib Retaining Wall

Sector

Residential

Client

Redrow Homes Eastern Ltd

Main contractor

Redrow Homes

Contract Value

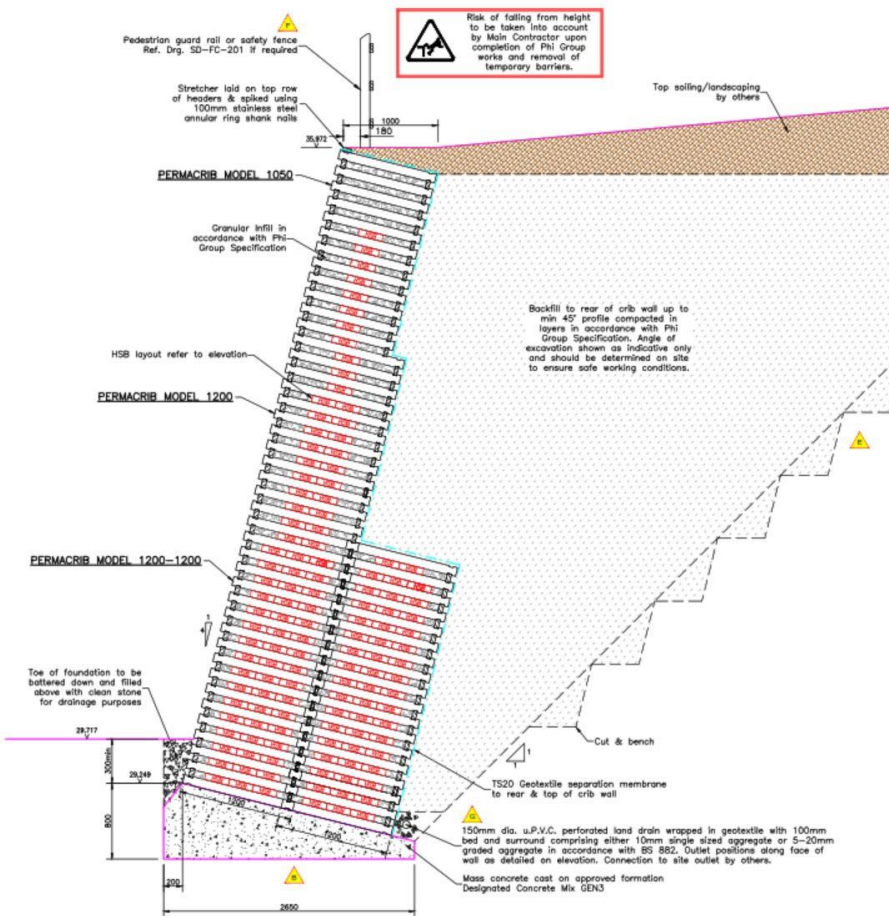
£415,000.00

Keller companies

Phi Group



Cross Section



Contact Phi Group

Robert Torrington

01242 707600

southern@phigroup.co.uk